



# Evidence pack

## West Coast region

June 2025

Version 1.0

## **Copyright information**

Copyright ©. This copyright work is licensed under the Creative Commons Attribution 4.0 International licence. In essence, you are free to copy, distribute and adapt the work, as long as you attribute the work to NZ Transport Agency Waka Kotahi (NZTA) and abide by the other licence terms. To view a copy of this licence, visit <http://creativecommons.org/licenses/by/4.0/>.

## **Disclaimer**

NZTA has endeavoured to ensure material in this document is technically accurate and reflects legal requirements. However, the document does not override governing legislation. NZTA does not accept liability for any consequences arising from the use of this document. If the user of this document is unsure whether the material is correct, they should refer directly to the relevant legislation and contact NZTA.

## **More information**

NZ Transport Agency Waka Kotahi

Published June 2025

Version 1.0

If you have further queries, call our contact centre on 0800 699 000 or write to us:

NZ Transport Agency Waka Kotahi

Private Bag 6995

Wellington 6141

# Contents

<b>Introduction .....</b>	<b>5</b>
What's in the evidence pack? .....	5
What's in this West Coast region section? .....	5
<b>West Coast overview .....</b>	<b>6</b>
<b>Strategic measures – current and future .....</b>	<b>9</b>
Healthy and safe people.....	9
Insights .....	9
Resilience and security.....	10
Insights .....	10
Economic prosperity .....	11
Insights .....	11
Environmental sustainability .....	12
Insights .....	12
Inclusive access .....	13
Insights .....	13
Interdependencies between outcomes .....	14
<b>Current and future challenges .....</b>	<b>15</b>
National context.....	15
Maintaining existing networks .....	15
Access to opportunities and enabling the efficient movement of freight around the country ....	15
Resilience to natural hazards and climate change.....	16
Congestion and capacity constraints, especially in large and growing cities .....	17
Reducing the level of harm to people and the environment .....	17
Regional context.....	19
Improving transport resilience.....	19
Funding new, and maintaining existing infrastructure .....	20
Improving road safety .....	20
Improving transport accessibility for all communities .....	21
State highway hotspots .....	21
Medium or low cumulative deficiencies.....	22
Planned or committed initiatives .....	22
<b>Focusing effort.....</b>	<b>23</b>
Longer-term investment focus .....	23
Resilience .....	23
Transport connectivity.....	23
Economic and urban development .....	23
Safety and environment.....	24

Short-term investment focus.....	24
Resilience .....	24
Transport connectivity.....	24
Economic and urban development .....	24
Safety and environment.....	25
Community and accessibility.....	25
Potential interventions .....	25
Insights .....	25
Short-list of most effective interventions .....	26
<b>Appendix A: Data sources for the strategic measures .....</b>	<b>27</b>
Healthy and safe people.....	27
Infrastructure risk rating (safety) .....	29
Resilience and security.....	30
Economic prosperity .....	31
5.1.2 Travel time reliability – motor vehicles .....	32
5.1.3 Travel time delay.....	32
5.2.3 Freight – mode share weight – base year 2024.....	33
5.2.3 Freight – mode share weight – future year 2048 .....	33
Environmental sustainability .....	34
8.1.1 Greenhouse gas emissions (all vehicles).....	35
8.1.3 Light vehicle use impacts.....	35
Inclusive access .....	36
10.2.1 People – mode share.....	36
Accessibility to employment.....	37
10.3.1 Access to key social destinations (all modes).....	37
<b>Appendix B: Intervention Catalogue .....</b>	<b>39</b>

# Introduction

This West Coast region section is part of the *Evidence pack*, which intended to help in the preparation of the strategic front end of regional land transport plans (RLTPs).

It does this by providing a consistent set of data and information setting out the current and future state of New Zealand's transport system at a national and regional level, and what interventions are likely to be effective to address identified deficiencies.

This iteration (version 1, June 2025) is the first step in the collaborative development with the sector of consistent and comprehensive evidence and information. For future iterations we will be drawing on your feedback to iteratively improve it and close any data and analysis gaps.

For more background information about the evidence pack, see the [Introduction and national summary](#).

## What's in the evidence pack?

The complete evidence pack is available on the [Transport Insights portal](#).

There you will find:

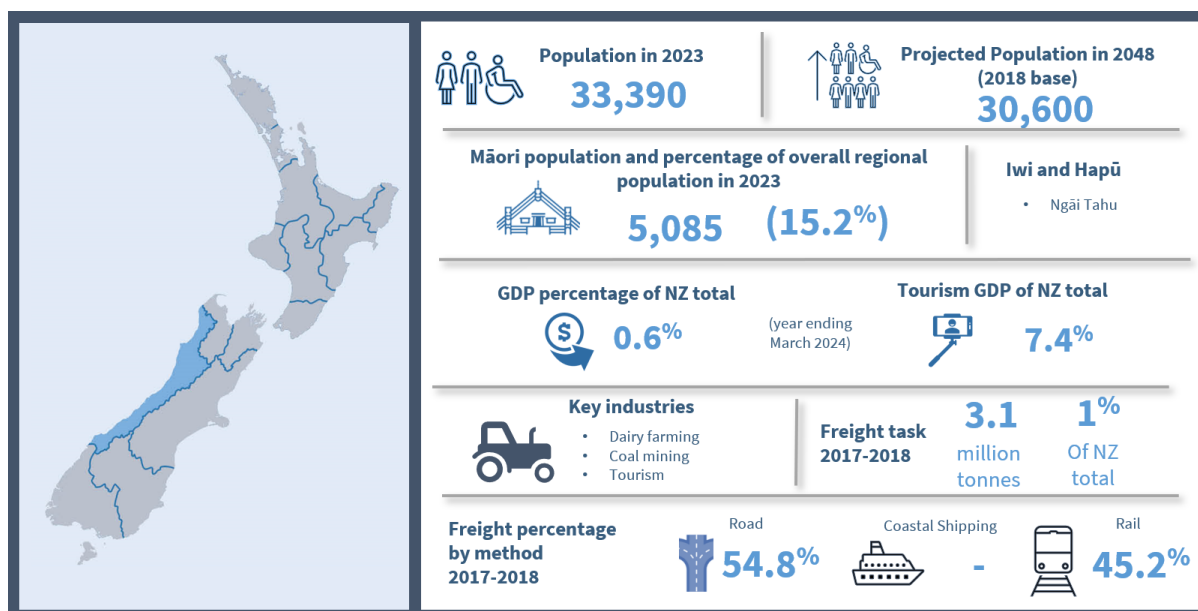
- evidence pack introduction and national summary, which gives you more background to the pack, its purpose and where the information and data are sourced from, and provides an overview for the whole country
- a section for each region, with data and information (calculated as strategic measures) specific to that region, and discussion of how it fits into the national network.

## What's in this West Coast region section?

Each regional section follows the same structure:

- **West Coast overview** – a brief overview of the region.
- **Strategic measures** – which looks at how the region currently rates against the 14 strategic measures from the Land Transport Benefits Framework, and how it is expected to change over time.
- **Current and future challenges** – specific issues for the region to address.
- **Focusing effort** – identifies key areas to focus investment in the short and longer term, and includes targeted suggestions of potential interventions.
- **Appendices** – data sources for the strategic measures and more information on potential interventions.

## West Coast overview



The West Coast Te Tai o Poutini is home to some spectacular landscapes and natural environments, which attract tourists and outdoor enthusiasts. It's the most sparsely populated of the country's regions, with conservation land making up nearly 85 percent of the land area. The region is relatively isolated, and relies heavily on SH6, SH73, and the Midland Rail Line to connect communities and move freight and people.<sup>1</sup>

The West Coast population is expected to decline from 33,390 to 30,600 by 2048 because of an ageing population, declining birth rate, low immigration, and people leaving the region. All districts, including the largest centre, Greymouth, are expected to experience this population decline.<sup>2</sup> The proportion of Māori was 15.2 percent in 2023, which is lower than the national rate of 19.6 percent.<sup>3</sup> The average age of the region's population is increasing faster than the national average, with 31 percent expected to be aged 65 or over by 2048<sup>4</sup>.

The West Coast is performing below the national average in terms of economic productivity and employment rates. The region is heavily reliant on tourism and, before COVID-19, domestic and international tourism was forecast to grow. With 50 percent of tourism spend coming from international visitors, the region was heavily impacted by border closures, and the ongoing impact remains unclear. Domestic tourism has not offset this reduction in visitor numbers, largely because of how far away the West Coast is from major population centres in the North Island.<sup>5</sup>

<sup>1</sup> NZTA (2024). Regional summary West Coast Te Tai o Poutini – NLTP 2024–27. <https://www.nzta.govt.nz/assets/planning-and-investment/nltp/2024/docs/regional-summaries/west-coast-regional-summary-nltp-2024-27.pdf>

<sup>2</sup> Te Tai o Poutini West Coast Regional Skills Leadership Group (2023). Summary of Te Tai o Poutini West Coast Regional Skills Leadership Group's advice to the Tertiary Education Commission for investment in 2025. <https://www.mbie.govt.nz/assets/west-coast-rslg-advice-to-tec-for-2025-investment-summary.pdf>

<sup>3</sup> Stats NZ (2024). 2023 Census national and regional data. <https://www.stats.govt.nz/infographics/2023-census-national-and-regional-data>

<sup>4</sup> Te Tai o Poutini West Coast Regional Skills Leadership Group (2023). Summary of Te Tai o Poutini West Coast Regional Skills Leadership Group's advice to the Tertiary Education Commission for investment in 2025. <https://www.mbie.govt.nz/assets/west-coast-rslg-advice-to-tec-for-2025-investment-summary.pdf>

<sup>5</sup> Jobs for Nature (2023). Regional Profile: West Coast/Te Tai o Poutini. [https://www.jobsfornature.govt.nz/assets/Publications/Regional-profile\\_West-Coast.pdf](https://www.jobsfornature.govt.nz/assets/Publications/Regional-profile_West-Coast.pdf)



The asset base in the Māori economy in the Waitaha rohe that spans the regions of West Coast, Canterbury, Otago, and Southland was valued at \$17.7 billion in 2023, with the primary sector and property sector being significant contributors.<sup>6</sup>

The road network in the West Coast includes approximately 3000km of roads, with 870km designated as State Highways and the remaining 2,135km as local roads (of which 960km is unsealed).<sup>7</sup> The West Coast region has a total of 1101 road bridges. This includes 628 bridges on local roads and 473 bridges on state highways. The rail line in the West Coast region is approximately 303km long, primarily consisting of the Midland Rail line.<sup>8</sup> State highways within the region account for 8 percent of the total length of the national state highway network, even though the West Coast has less than one percent of New Zealand's population.

State highways 6 and 73 and the Midland Rail Line are crucial for maintaining connections to other regions, especially east to Christchurch.<sup>9</sup> Travel along the West Coast also often forms part of a larger tourist journey that includes parts of Otago, Canterbury and the Top of the South regions. Tourism on the West Coast is heavily reliant on the transport network, with most visitors arriving by self-drive vehicles. Access to key destinations depends primarily on the state highway system, as well as local roads and those managed by the Department of Conservation.<sup>10</sup>

The region faces significant challenges in maintaining connections because of natural hazards such as slips, rock falls, and flooding.<sup>11</sup> When state highways are closed by damage from natural hazards, often there are no alternative routes and any detours are extremely lengthy. This greatly affects tourism and freight movements. The performance of the state highway is therefore particularly important for the West Coast. Investments in maintaining and improving these routes are essential for the region's economic recovery and resilience.<sup>12</sup>

The West Coast faces key transport problems that need to be addressed within the next 10 years. This includes a network that is increasingly vulnerable to adverse events, resulting in economic and social disruption. Ageing and inadequate infrastructure (such as bridges that are unsuitable for high productivity motor vehicles (HPMV), unsealed roads, constrained pavement widths), combined with the changing needs of transport users over time (for example changes in freight), means there are pockets of infrastructure across the region that are no longer fit for purpose. The natural topography and dispersed settlement pattern also contribute toward some challenging driving conditions. These factors combined with a high proportion of visiting drivers who are unfamiliar with the local environment, and drivers with poor behaviours, also contribute to crashes that cause death or serious injury.<sup>13</sup>

---

<sup>6</sup> Ministry of Business, Innovation and Employment (2025). *Te ōhanga Māori 2023 – The Māori economy 2023*. <https://www.mbie.govt.nz/assets/te-ohanga-maori-2023-report.pdf>

<sup>7</sup> NZTA (n.d.). Data and tools. <https://www.nzta.govt.nz/planning-and-investment/learning-and-resources/transport-data/data-and-tools/>

<sup>8</sup> KiwiRail (n.d.) KiwiRail network map. <https://kiwirail.maps.arcgis.com/apps/View/index.html?appid=556c4a9c73914fe1983529ddf9ae5099>

<sup>9</sup> NZTA (2024). Regional summary West Coast Te Tai o Poutini – NLTP 2024–27. <https://www.nzta.govt.nz/assets/planning-and-investment/nltp/2024/docs/regional-summaries/west-coast-regional-summary-nltp-2024-27.pdf>

<sup>10</sup> West Coast Regional Council (2024). Regional Land Transport Plan 2021–2031. <https://www.wcrc.govt.nz/publications/transport-plans/regional-land-transport-plan>

<sup>11</sup> NZTA (2024). Regional summary West Coast Te Tai o Poutini – NLTP 2024–27. <https://www.nzta.govt.nz/assets/planning-and-investment/nltp/2024/docs/regional-summaries/west-coast-regional-summary-nltp-2024-27.pdf>

<sup>12</sup> NZTA (2024). Regional summary West Coast Te Tai o Poutini – NLTP 2024–27. <https://www.nzta.govt.nz/assets/planning-and-investment/nltp/2024/docs/regional-summaries/west-coast-regional-summary-nltp-2024-27.pdf>

<sup>13</sup> West Coast Regional Council (2024). Regional Land Transport Plan 2021–2031. <https://www.wcrc.govt.nz/publications/transport-plans/regional-land-transport-plan>

There is planning underway to redevelop and revitalise Greymouth and Franz Josef. The Greymouth CBD Redevelopment Plan aims to upgrade public spaces, improve pedestrian and cycling infrastructure, and enhance connectivity, all while preserving the town's heritage.<sup>14</sup> Meanwhile, the Franz Josef Destination Precinct project focuses on developing a 16-hectare area of natural rainforest on the edge of the town centre into a vibrant public space with adventure activities, local cuisine, art markets, retail, and entertainment, emphasising sustainability and community engagement.<sup>15</sup> The regional land transport plan (RLTP) 2024–34 includes Westport flood protection to upgrade infrastructure against flooding, Hokitika Airport Access improvements, and plans to extend the West Coast Wilderness Trail to promote cycling and active transport.<sup>16</sup>

The State Highway Investment Proposal (SHIP) 2024–34 focuses on SH6 safety upgrades to enhance road safety, ongoing maintenance and renewals of state highways, and various resilience projects to improve network resilience against environmental challenges. There are also projects aimed at supporting urban growth by improving transport links and infrastructure.<sup>17</sup>

---

<sup>14</sup> Te Tai o Poutini Plan (2023). Greymouth CBD Redevelopment Plan. [https://tppp.nz/wp-content/uploads/2022/01/GreymouthCBDRedevelopmentPlanFINAL190723\\_lowres.pdf](https://tppp.nz/wp-content/uploads/2022/01/GreymouthCBDRedevelopmentPlanFINAL190723_lowres.pdf)

<sup>15</sup> Bossley Architects (n.d.). Franz Josef Destination Precinct. <https://www.bossleyarchitects.co.nz/project/franz-josef-destination-precinct/>

<sup>16</sup> West Coast Regional Council (2024). Regional Land Transport Plan 2021–2031. <https://www.wcrc.govt.nz/publications/transport-plans/regional-land-transport-plan>

<sup>17</sup> NZTA (2024). State Highway Investment Proposal 2024–34. <https://www.nzta.govt.nz/resources/state-highway-investment-proposal-2024-34>



## Strategic measures – current and future

This section provides tables summarising the 14 strategic measures in relation to this region. The data and evidence used to produce these results is included in [Appendix A](#).

The 14 strategic measures are a subset of 60+ measures included in the [Land Transport Benefits Framework](#). They have been selected to provide a coarse but practical overview of the 5 Transport Outcomes, as shown in the diagram.

The tables provide indicative current and future values for the 14 strategic measures (grouped by outcome), to understand how each measure (and therefore outcome) is likely to change if there is no significant investment (beyond that already committed).

More detail about the measures can be found in the [Land Transport Benefits Framework measures manual](#).



### Healthy and safe people

Benefit framework measure	Units	Current (2023/24)	Future (2048)	Change
1.1.1 Collective risk (crash density)	Average annual fatal and serious per kilometre of road section	0.014	0.014	0.000 (0%)
1.1.3 Deaths and serious injuries (DSIs)	Number of DSIs (annual)	43	43	0 (0%)
1.1.4 Personal risk (crash rate)	Average annual DSI per 100 million vehicle kilometres travelled	7.548	7.548	0 (0%)
1.2.1 Road assessment rating – roads	Infrastructure risk rating (applies to both current and future)	High: 17.75% Medium-high: 29.97% Medium: 38.04% Low-medium: 13.61% Low: 0.63%		N/A

### Insights

- If there is no significant investment (beyond that already committed), crash density and the number of deaths and serious injuries (DSI) are projected to remain unchanged by 2048. Projections are unavailable for other strategic measures for safety but indicate the West Coast currently performs moderately for this outcome on those strategic measures.

- Collective risk (crash density) shows where the biggest difference can be made in terms of absolute numbers of deaths and serious injuries (DSI) and is affected by population size and transport mode chosen. The average annual fatal and serious crashes per kilometre of road section in the West Coast are currently much lower than the national average and the third-lowest average of all regions. If there is no significant investment (beyond that already committed), crash density is projected to remain unchanged in 2048.
- The West Coast has the second-lowest number of DSI of all regions, with 2 percent of the national total and less than one-quarter of the average number of DSI of all regions. The number of DSI is projected to stay the same by 2048.
- Personal risk (crash rate) highlights areas where a crash is more likely to occur based on use of the road network and is not affected by population size. The average annual DSI per 100 million vehicle kilometres travelled (VKT) in the West Coast is currently more than the national average and the fourth-highest of all regions.
- Infrastructure risk rating (IRR) describes the underlying level of risk a road presents to an individual road user based on key physical and operational attributes. The proportion of the West Coast's roads rated as being at medium-high and high risk (that is, with DSI per 100 million VKT equal to or greater than 8) is 2 percent less than the country as a whole and in the middle of the range of all regions.

## Resilience and security

Benefit framework measure	Units	Current (2023/24)	Future (2048)	Change
4.1.1 Availability of a viable alternative to high-risk and high-impact route	Percentage of high-risk, high-impact route with a viable alternative	Not included in this release		
4.1.2 Level of service and risk (note that for this evidence pack this data is from the National Resilience Assessment Tool (NRAT) and includes only state highways)	Number of identified sites in region by combined risk rating (future, geological and hydrological)	Low: 34 Med: 21 High: 49 Critical: 34 Not yet rated: 37	N/A	N/A

### Insights

- The high proportion of high and critical risks indicate the West Coast currently performs poorly for this outcome.
- Hazard events at identified risk sites can lead to unplanned closures of the state highway network, impacting network resilience. The West Coast is mostly at risk from geological events (rockfall, overslips, underslips), which make up 144 of the 175 resilience risk sites in the region.
- High and critical risks make up 47 percent of all risks in the region rated to date. The proportion of high and critical risks is 16 percent higher than the national rate and highest in the country of all regions, if there is no significant investment (beyond that already committed).

## Economic prosperity

Benefit framework measure	Units	Current (2024)		Future (2048)	Change
5.1.2 Travel time reliability – motor vehicles (note for this evidence pack, the data only relates to state highway traffic monitoring system (TMS) sites)	Calculated using coefficient of variation (CoV); standard deviation of travel time divided by average minutes travel time  Rate: High <0.3, Medium 0.3–0.6, Low >0.6)	Low: AM 2% Med: AM 0% High: AM 98%	Day 3% Day 1% Day 96%	Low: N/A% Med: N/A% High: N/A%	Low: N/A% Med: N/A% High: N/A%
5.1.3 Travel time delay (note, data is from National Network Performance (NNP) model, which is currently limited to state highway TMS sites).	Difference between average travel time during AM peak and average travel time during the inter-peak in minutes per kilometre (by mode) as a percentage	Car: 3% PT: N/A Cycle N/A		Car: N/A PT: N/A Cycle: N/A	Car: N/A PT: N/A Cycle: N/A
5.2.2 Freight – mode share value	Percentage of value for each mode	Not included in this release			
5.2.3 Freight – mode share weight	Percentage of weight for each mode	Road: 57% Rail: 43%		Road: 60% Rail: 40%	Road: 3% Rail: -3%

### Insights

- If there is no significant investment (beyond that already committed), the proportions of freight carried by road and rail in the West Coast are projected to increase slightly for road and decrease slightly for rail by 2048. A projection is unavailable for travel time reliability, but the poor travel time reliability in the West Coast compared to the national rate and other regions indicate the West Coast currently performs poorly for this strategic measure.
- Travel time reliability can impact the efficient movement of people and goods. 2 percent of the West Coast's state highway network (limited to data based on where we have TMS sites) has poor travel time reliability (that is, a high CoV), compared to 6 percent for the country as a whole, and the third-lowest proportion of all regions. Unexpected events on the state highway network impacts travel time reliability in the West Coast. The capability to estimate travel time reliability for future years is still being developed and is intended to be included in later iterations of the evidence pack
- While road freight is more efficient over short distances, rail freight is safer, lower emissions and more efficient over longer distances. 57 percent of freight is carried by road in the West Coast, 30 percent lower than the national rate and the lowest of all regions. 43 percent is carried by rail, 30 percent higher than the national rate and the highest proportion of all regions, This reflects the long distance and difficult terrain for exports to travel to Lyttelton Port.

- If there is no significant investment (beyond that already committed), the share of freight carried by road in the West Coast is projected to increase by 2048, consistent with the trend for the national rate. This reflects forecast higher demand for imports and consumer goods, while primary sector exports are forecast to remain flat and the uncertain future of coal exports via Lyttelton Port.

## Environmental sustainability

Benefit framework measure	Units	Current (2023)	Future (2048)	Change
8.1.1 Greenhouse gas emissions (all vehicles)	Annual tonnes of CO <sub>2</sub> equivalents (CO <sub>2</sub> -e) emitted	0.17 m	0.10 m	-0.07 m (-41%)
8.1.3 Light vehicle use impacts	Annual light vehicle kilometres travelled (light VKT)	494 m	476 m	-18 m (-4%)

### Insights

- If there is no significant investment (beyond that already committed), the West Coast's greenhouse gas (GHG) emissions from all vehicles are projected to reduce significantly (primarily due to a highly uncertain assumed level of vehicle fleet electrification) and light vehicle VKT is projected to decrease slightly.
- Land transport is a major contributor to GHG emissions. The West Coast accounts for 1 percent of transport GHG emissions in New Zealand. This proportion of the national total is the second-smallest contribution of all regions. If there is no significant investment (beyond what is already committed), the West Coast's GHG emissions are projected to decrease by 2048 – primarily through electrification of the vehicle fleet (as forecast using the Ministry of Transport Vehicle Fleet Model (VFM)) – the proportion of the national total will remain stable. This assumed level of electrification has high uncertainty, and is a major factor affecting GHG emissions; therefore the calculated 57 percent decrease needs to be considered in this light.
- Light vehicle VKT is currently the largest source of transport GHG emissions. Electrification of the light vehicle fleet could be complemented by mode shift to public transport and/or active modes to maximise a reduction of GHG emissions. The West Coast accounts for 1 percent of light vehicle VKT in New Zealand. This proportion is the second-smallest contribution of all regions. If there is no significant investment (beyond what is already committed), the West Coast's volume of light vehicle VKT is projected to decrease and the proportion of the national total is projected to remain unchanged in 2048.

## Inclusive access

Benefit framework measure	Units	Current (2023)				Future (2048)				Change			
10.2.1 People – mode share	Percentage by mode (Census (2023) journey to work and education)	Car:	85.3%			N/A				N/A			
		PT:	0.2%			N/A				N/A			
		Cycle:	3.3%			N/A				N/A			
		Peds:	11.3 %			N/A				N/A			
10.3.1 Access to key social destinations (all modes)	Number of jobs (x1000) accessible by mode in AM peak (car 40 min, PT 45 min, cycle 45 min) and distance from city centre (km)		0–5	5–10	10+km		0–5	5–10	10+km		0–5	5–10	10+km
		Car:	6	6	15	Car:	6	6	14	Car:	-6%	4%	5%
		PT:	4	0	2	PT:	3	0	2	PT:	-8%	5%	25%
		Cycle:	6	5	3	Cycle:	5	5	3	Cycle:	-8%	1%	14%

### Insights

- If there is no significant investment (beyond that already committed), the proportion of jobs more than 5km from central Greymouth accessible by public transport and cycling is projected to decrease by 2048. A projection is unavailable for mode share for journeys to work and education, but the high proportion of journeys by car in the West Coast compared to the national rate and other regions indicate the West Coast currently performs poorly for this outcome.
- The availability of public and shared transport services and active mode infrastructure can reduce car dependence, which can be a barrier to access for those who are on low incomes or unable to drive. Journeys to work and education in the West Coast by all modes are 1 percent of the national total and this proportion is the lowest of the range of all regions.
- Journeys by car in the West Coast are 6 percent higher than the national rate and in the middle of the range of all regions.
- Public transport use in the West Coast is 7 percent lower than the national rate and in the middle of the range of all regions.
- The proportion of people cycling in the West Coast is the same as the national rate and in the middle of the range of all regions.
- The proportion of people walking in the West Coast is 1 percent higher than the national rate and the third-highest of all regions.
- The low provision of public and shared transport services in lower socioeconomic areas and infrastructure for walking and cycling in urban areas impacts mode share for people in the West Coast.
- The accessibility of jobs by modes other than car increases people's ability to work. There are significantly more jobs accessible by car than other modes in the West Coast.

- Within 5km of central Greymouth, accessibility by car is higher than for both public transport and cycling. For locations further out, the difference is greatest for public transport in the 5–10km band. The proportion of jobs in the 10+km band accessible by public transport and cycling is projected to increase by 2 percent respectively by 2048.
- Several settlements around the West Coast and low population density means people who live further away from central Greymouth work more locally.
- Low population density increases the demand for travel to work, in terms of distance travelled and dependence on cars as there are few direct public transport options 5–10km from central Greymouth with more affordable housing. The lowest income households spend a greater proportion of their incomes on transport.<sup>18</sup> These factors combine to result in transport poverty (where people lack adequate access to affordable and reliable transport, hindering their ability to participate in essential activities like work).

## Interdependencies between outcomes

- Addressing the current and future challenges for one transport outcome can have negative impacts on others. On the other hand, it is possible to take an approach to each outcome that makes a positive impact on the others.
- For example, improving the quality of key state highways to address current geological risks (see resilience and security) could reduce safety risk (see healthy and safe people). Safety risks could be reduced further by implementing a compact urban form, increasing the coverage of public transport services further from central Greymouth, and more shared transport in dispersed areas, which could improve access to work and education (see inclusive access). This would be effective for reducing emissions, mitigating the long-term impacts of climate change (see environmental sustainability) and improving travel time reliability and the efficient movement of goods in the West Coast (see economic prosperity).

---

<sup>18</sup> Te Manatū Waka Ministry of Transport (2022). *The distributional impacts of transport-related carbon policy*. <https://www.transport.govt.nz/assets/Uploads/The-Distributional-Impacts-of-Transport-final-report-005.pdf>



## Current and future challenges

To achieve a land transport network that is safe, efficient and effective for the West Coast, it's important to understand it in combination with the needs and lives of the region's people and the unique natural and built environment.

### National context

New Zealand's transport networks are extensive and vital for the country's connectivity and economic prosperity. The state highway network spans about 11,750km,<sup>19</sup> while the local road network covers about 83,368km.<sup>20</sup> Additionally, the rail network consists of around 4128km of rail lines.<sup>21</sup>

#### Maintaining existing networks

Maintaining such a vast network requires significant effort. Annually, 5–10 percent of the road network (4750km to 9500km) needs resurfacing or rebuilding.<sup>22</sup> The network includes nearly 4200 bridges<sup>23</sup> on state highways and about 15,000 on local roads.<sup>24</sup> Urban growth and higher traffic volumes, especially of heavy vehicles, increase maintenance needs, which strains budgets. Neglecting maintenance can lead to safety risks, higher long-term costs, and disrupted connectivity.<sup>25</sup>

Looking ahead, future challenges are expected to intensify. Climate change is likely to increase the frequency and severity of extreme weather events, such as flooding and heatwaves, which can damage infrastructure and accelerate wear and tear. Technological advancements, such as the rise of electric and autonomous vehicles, may require new types of infrastructure and maintenance protocols. Additionally, population growth and urban sprawl will create pressure to further expand the network, which will lead to increasing the scale and complexity of maintenance operations.

#### Access to opportunities and enabling the efficient movement of freight around the country

The transport system underpins economic and social wellbeing, ensuring access to jobs, education, healthcare, and efficient freight movement. Remote and rural areas face significant access challenges, especially during adverse weather. These challenges include a lack of alternatives to private vehicle trips as public transport services are not a viable alternative because of coverage and frequency. In addition, there is a lack of redundancy in parts of the land transport system – some places rely on one or 2 critical lifelines to stay connected.

Looking ahead, existing access challenges in remote and rural areas will be exacerbated by the impacts of climate change and demographic change. The population is expected to remain static or decline in smaller, rural, and remote districts. In some areas, people aged over 65 are expected to make up more than 35 percent of the population. The affordability of local government rates increases will be an issue in these areas. Network resilience will be further challenged as damage caused by climate change becomes more frequent, outages last longer and repair costs increase. Rural and coastal communities may become increasingly isolated and have difficulty accessing essential services – this may particularly impact Māori.

---

<sup>19</sup> NZTA (n.d.). State highway frequently asked questions. <https://www.nzta.govt.nz/roads-and-rail/research-and-data/state-highway-frequently-asked-questions/>

<sup>20</sup> Ministry of Transport (n.d.). Statistics and insights. <https://www.transport.govt.nz/statistics-and-insights>

<sup>21</sup> Stats NZ (n.d.). Transport. <https://www.stats.govt.nz/topics/transport>

<sup>22</sup> NZTA (n.d.). Road management and maintenance. <https://nzta.govt.nz/roads-and-rail/management-and-maintenance/>

<sup>23</sup> NZTA (n.d.). Bridges and structures. <https://www.nzta.govt.nz/roads-and-rail/bridges-and-structures/>

<sup>24</sup> Figure.NZ (n.d.). Number of bridges on local roads in New Zealand. <https://figure.nz/chart/nHM7UwJuYIrWnLdT>

<sup>25</sup> Government of New Zealand (n.d.). Government Policy Statement on land transport 2024–34. <https://www.transport.govt.nz/assets/Uploads/Government-Policy-Statement-on-land-transport-2024-FINAL.pdf>

Freight is a key part of economic activity and is fundamental to making places great to live (liveability).<sup>26</sup> The efficient movement of freight is essential for economic productivity. Current freight inefficiencies such as delays, detours and highly variable travel times can increase costs by up to 20 percent.<sup>27</sup>

Looking ahead, total freight volume is expected to increase by 39 percent by 2053.<sup>28</sup> The location of freight origin and destination may change. A growing population in the largest urban areas means more goods will need to be moved to these locations, and industry and population concentration is occurring in the upper North Island. Climate change is expected to change the nature and location of primary production and increase the frequency of extreme weather events, disrupting transport networks, isolating communities, and affecting freight reliability.<sup>29</sup> Technological shifts, including the rapid growth of e-commerce and the transition to low-emission freight vehicles, will require significant infrastructure upgrades and new logistics strategies to ensure efficiency and sustainability.<sup>30</sup>

### **Resilience to natural hazards and climate change**

New Zealand faces significant natural hazard risks, including earthquakes, floods, and cyclones, worsened by climate change. The land transport system has always been exposed to natural hazard risks, with minor closures or delays through small scale events like slips and localised flooding common. However, the network is increasingly exposed to national and regional scale events such as Cyclones Hale and Gabrielle and the Kaikoura earthquakes that caused widespread and significant damage.<sup>31</sup> For instance, Cyclone Gabrielle alone caused damage estimated at \$13.5 billion.<sup>32</sup>

Recovery from small events is quick, but larger events, such as Cyclone Gabrielle, cause extensive damage and long recovery times. The state highway network performs critical lifeline functions for communities, and repeated disruption to these functions impacts communities' access to the services they need.

Looking ahead, the land transport system will have to adapt to escalating impacts from natural hazards and climate change now and into the future. These impacts include sea-level rise and ongoing changes in the physical environment, as well as increasingly severe and frequent climate-related events such as storms, flooding, droughts, and wildfires.<sup>33</sup> The probability of an Alpine Fault earthquake occurring in the next 50 years is 75 percent, and there is a 4 out of 5 chance that it will be a magnitude 8+ event.<sup>34</sup> Such an event has the potential to cause severe damage and disruption across the entire South Island, with major consequences for the rest of the country.

---

<sup>26</sup> Auckland Transport (2020). Auckland freight plan. <https://at.govt.nz/media/1983982/auckland-freight-plan.pdf>

<sup>27</sup> Ministry of Transport (2023). Aotearoa New Zealand Freight and Supply Chain Strategy. [https://www.transport.govt.nz/assets/Uploads/MOT4806\\_Aotearoa-Freight-and-Supply-Chain-Strategy-p09-v03.pdf](https://www.transport.govt.nz/assets/Uploads/MOT4806_Aotearoa-Freight-and-Supply-Chain-Strategy-p09-v03.pdf)

<sup>28</sup> Ministry of Transport (2019). *New Zealand transport outlook – Freight model*. <https://www.transport.govt.nz/assets/Uploads/Data/Transport-outlook-updated/Freight-Model-Version-2-Documentation-20190423.pdf>

<sup>29</sup> KPMG & The Aotearoa Circle (2024). *Transport sector climate change scenarios: Report on big climate risks to New Zealand's transport sector*. <https://kpmg.com/nz/en/home/media/press-releases/2024/06/report-on-big-climate-risks-to-new-zealand-s-transport-sector.html>

<sup>30</sup> Ministry of Transport (n.d.). Climate change — emissions work programme. <https://www.transport.govt.nz/area-of-interest/environment-and-climate-change/climate-change>

<sup>31</sup> Byett, A, et al (2019). *Climate change adaptation within New Zealand's transport system*. Motu Economic and Public Policy Research. <https://www.motu.nz/our-research/environment-and-resources/climate-change-impacts/climate-change-adaptation-within-new-zealands-transport-system>

<sup>32</sup> NIWA (2024). Cyclone Gabrielle was intensified by human-induced global warming. <https://niwa.co.nz/news/cyclone-gabrielle-was-intensified-human-induced-global-warming>

<sup>33</sup> NZTA (2022). *Tiro Rangi: our climate adaptation plan 2022–2024*. <https://www.nzta.govt.nz/assets/resources/tiro-rangi-our-climate-adaptation-plan-2022-2024/tiro-rangi-our-climate-adaptation-plan-20222024.pdf>

<sup>34</sup> AF8 (2022). *AF8 Programme Strategy 2022–25*. [https://af8.org.nz/media/fpxjy3uu/af8\\_programme-strategy-2022-25-jul22.pdf](https://af8.org.nz/media/fpxjy3uu/af8_programme-strategy-2022-25-jul22.pdf)

These types of impacts will continue and will affect communities and the transport networks that connect them. As damage becomes more frequent, outages last longer and repair costs increase, rural and coastal communities may become increasingly isolated and have difficulty accessing essential services, and this may especially impact Māori. In urban areas, the impacts of climate change on multimodal networks can be complex, widespread and cascade across the land transport system. Interregional connections will also be disrupted.

### **Congestion and capacity constraints, especially in large and growing cities**

New Zealand's road network is a vital part of the country's infrastructure, with significant portions now facing congestion and capacity constraints. This is particularly evident in Auckland, where congestion costs are estimated to range between \$1.3 billion and \$2.6 billion annually.<sup>35</sup>

The demand for transport in New Zealand has grown rapidly, meaning that in some places the demand exceeds the ability of the transport system to cater for it. This has resulted in frequent congestion across parts of the road and public transport networks, particularly on motorways in Auckland, Tauranga, Wellington, Queenstown and Christchurch. Previously confined to 'rush hour' periods, congestion has steadily lengthened and worsened over time.<sup>36</sup> Congestion on the local road network is a growing concern, especially in urban areas. Rail network capacity restraints currently affect both public transport services in Auckland and Wellington, and freight movements across the country. Population growth, dispersed land use patterns, and increasing vehicle ownership will continue to contribute to this issue into the future.

Looking ahead, a growing population in the largest urban areas means more people who need to get to work, education, business and entertainment. New Zealand's population is projected to reach over 6 million by the early 2030s, with much of this growth concentrated in urban areas.<sup>37</sup> This, combined with dispersed land use and rising vehicle ownership – currently at nearly 0.9 vehicles per person – will further strain transport corridors and worsen congestion.<sup>38</sup> Without significant investment, it is likely congestion will worsen, network productivity will fall, and emissions will rise. Future challenges include adapting for electric and autonomous vehicles, building resilience to climate impacts and reducing emissions through urban planning, mode shift and fleet carbonisation.

### **Reducing the level of harm to people and the environment**

New Zealand's land transport system faces significant safety and environment challenges. In 2024, there were 292 road fatalities, placing New Zealand 7th highest in road deaths per capita among 35 OECD countries.<sup>39</sup> Contributing factors include adverse weather, unsafe driving behaviour, and poor road conditions. Rural road fatalities are disproportionately high, accounting for 60 percent of all road deaths, despite rural roads making up only 40 percent of the network.<sup>40</sup>

Air pollution from fossil fuels and particulate matter continues to impact public health, contributing to an estimated 2247 deaths in 2016.<sup>41</sup> While low-emission vehicles are essential for reducing transport-related emissions, they are not a complete solution. A broader systems approach – encompassing

---

<sup>35</sup> NZTA (2013). *The costs of congestion reappraised*.

<https://www.nzta.govt.nz/assets/resources/research/reports/489/docs/489.pdf>

<sup>36</sup> NZTA (2024). *Significant land transport challenges facing New Zealand*.

<https://www.nzta.govt.nz/assets/planning-and-investment/nltip/2024/docs/significant-challenges-nltip-2024-27.pdf>

<sup>37</sup> NZTA (n.d.). *Significant land transport challenges facing New Zealand*.

<https://www.nzta.govt.nz/assets/planning-and-investment/nltip/2024/docs/significant-challenges-nltip-2024-27.pdf>

<sup>38</sup> NZTA (n.d.). *Significant land transport challenges facing New Zealand*.

<https://www.nzta.govt.nz/assets/planning-and-investment/nltip/2024/docs/significant-challenges-nltip-2024-27.pdf>

<sup>39</sup> International Transport Forum (2024). Road safety country profile – New Zealand 2023. <https://www.itf-oecd.org/sites/default/files/new-zealand-road-safety.pdf>

<sup>40</sup> Stats NZ (n.d.). Transport. <https://www.stats.govt.nz/topics/transport>

<sup>41</sup> Emission: Impossible Ltd and the HAPINZ 3.0 team (2022) Key findings from HAPINZ.

<https://ehinz.ac.nz/projects/hapinz3/key-findings-from-hapinz/>

clean energy, sustainable manufacturing, and urban planning – is needed to fully address environmental harm.<sup>42</sup>

The impact on the environment, including climate, on and from the transport network and its use is another pressing issue. The extensive road system crosses many sensitive ecosystems, habitats, and waterways, leading to habitat fragmentation, noise pollution, artificial light, and stormwater discharges.

Looking ahead, climate change is expected to intensify these impacts because of more frequent extreme weather events, increased infrastructure stress, and greater disruption to both human and natural systems. Future challenges will also include managing the environmental footprint of new transport technologies and ensuring that safety improvements keep pace with population growth and the needs of changing demographics (such as people with children), travel patterns (increased travel by older people) and vehicle types, while also taking advantage of new technologies (for example cooperative intelligent transport systems and alternatives to bitumen) to improve safety and environmental outcomes.

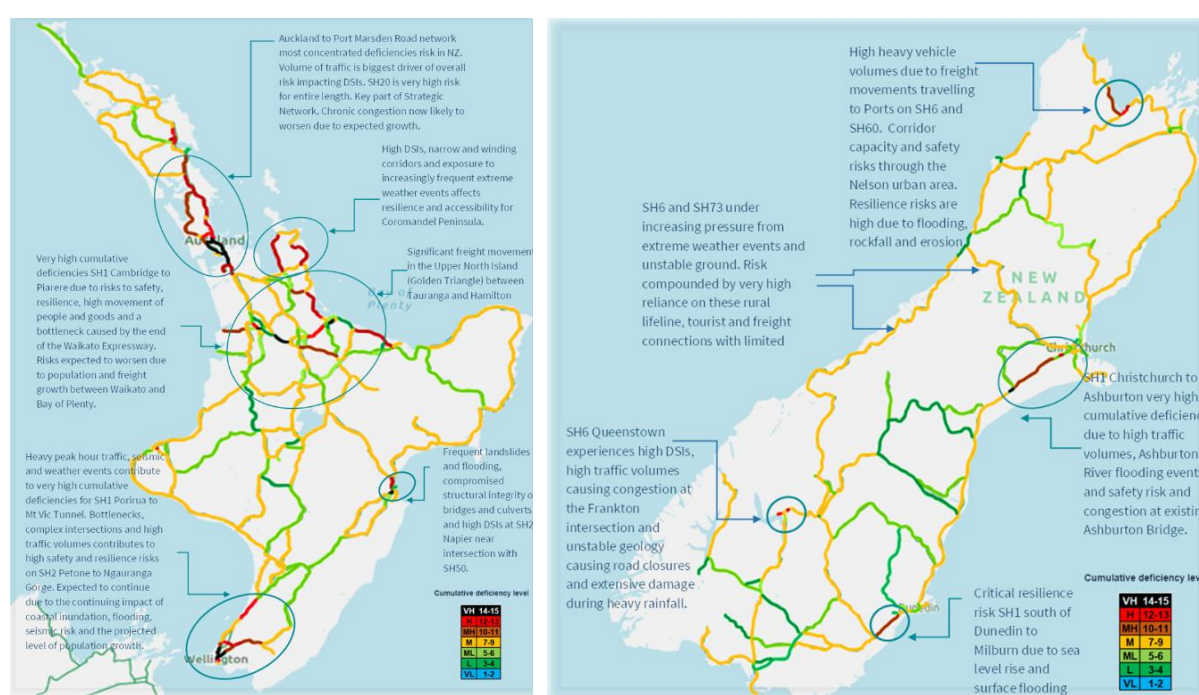


Figure 1: Cumulative (resilience, reliability and safety) deficiencies across the state highway network (source: NZTA data<sup>43</sup>)

<sup>42</sup> Auckland Council (2022). *Transport emissions reduction pathway*. <https://www.aucklandcouncil.govt.nz/plans-projects-policies-reports-by-laws/our-plans-strategies/Documents/transport-emissions-reduction-pathway.pdf>

<sup>43</sup> Analysis of NZTA National Resilience Assessment Tool (NRAT), NZTA average annual daily traffic and NZTA cumulative risk using DSI data from 2019 to 2023.

## Regional context

The West Coast's transport network plays a major role in the South Island. The South Island is vital to New Zealand's social and economic success. It's home to nearly a quarter New Zealand's population and generates more 22 percent of the national GDP. About 22 percent of the country's population growth over the next 20 years is expected in the South Island.



Figure 2: Map of the strategic network across the South Island (source: Arataki)

The West Coast transport network connects to:

- north: SH6 to Nelson/Tasman
- south: SH6 to Otago
- east: SH7 and SH73 and the Midland Rail Line to Canterbury.

This section discusses the key current and future challenges of the West Coast's transport network, using evidence and insights from NZTA's Arataki and regions planning documents.

### Improving transport resilience

Ports, like roads and rail, form part of the West Coast's transport network. The West Coast is the only region situated more than 150km from a major seaport such as Lyttelton. The local ports, located in Westport, Greymouth, and Jackson Bay, are strategically important assets that enhance resilience against natural disasters, support commercial viability, and foster economic growth. These ports, however, are making losses following a decline in export cargoes. Funding for port infrastructure has been provided by the Provincial Growth Fund and their future is closely tied to the outcomes of projects that generate bulk products needing transportation.<sup>44</sup>

<sup>44</sup> West Coast Regional Council (2024). Regional Land Transport Plan 2021–2031. <https://www.wcrc.govt.nz/publications/transport-plans/regional-land-transport-plan>



The next 30 years will see a growing risk of damage to road and rail networks because of increased rain and storm intensity, coastal and soil erosion, sea-level rise, flooding, slips, and storm surges.<sup>45</sup> Networks across the region are expected to come under increased pressure because of storm intensity combined with relatively unstable terrain, resulting in rockfall, landslips, erosion, and flooding. Particularly significant risks relate to rockfall and landslips along SH6, SH7, and SH73.

Without additional investment to increase the resilience and viability of the road, rail and port networks, their future remains uncertain.

### **Funding new, and maintaining existing infrastructure**

Although the West Coast comprises less than 1 percent of New Zealand's population, its state highways make up 8 percent of the state highway network.<sup>46</sup> In response to long-term challenges it faces, such as high unemployment and low incomes, the region has worked with central government and independent consultants to develop the Tai Poutini West Coast Growth Study, which identifies the region's opportunities for, and barriers to, economic growth.<sup>47</sup> The small proportion of rateable land, an increasing proportion of residents on fixed incomes and a declining population is likely to put pressure on the region's ability to:

- maintain existing infrastructure
- fund new infrastructure
- provide appropriate services.

Road infrastructure, including the many one-lane bridges along the West Coast's network (the greatest number of single-lane bridges in New Zealand, with about 50 on the state highway network),<sup>48</sup> supports economic growth by providing for the movement of freight and people. With minimal intervention, the ability to maintain the network, for example by replacing the one-lane bridges that are at the end of their useful lives, will be compromised.

### **Improving road safety**

The number of deaths and serious injuries per capita on the roads of the West Coast is among the highest in New Zealand.<sup>49</sup> This is despite very low traffic volumes across the region's road network. For many visitors, driving on local roads is as much a part of the iconic West Coast experience as visiting popular attractions. Many visitors are on self-drive holidays, driving rented campervans or towing caravans. With long travel times and narrow roads, road safety is a key issue for the region, particularly with respect to head on crashes, driver behaviour, fewer suitable locations to take a break and a high number of crashes involving motorcyclists.<sup>50</sup> Without safety improvements to the network and investment to improve key visitor routes, the number of deaths and serious injuries per capita are likely to remain amongst the highest in the country.

In the NLTP 2024–27 investment for the West Coast includes increased funding for road renewal work such as resealing, barriers and signs, and drainage maintenance, to help make the roads safer.

---

<sup>45</sup> Ministry for the Environment (n.d.). Climate projections map. Climate Data Initiative. <https://map.climatedata.environment.govt.nz/>

<sup>46</sup> West Coast Regional Council (2024). Regional Land Transport Plan 2021–2031. <https://www.wcrc.govt.nz/publications/transport-plans/regional-land-transport-plan>

<sup>47</sup> Ministry for Primary Industries (2016). Tai Poutini West Coast growth study. <https://www.mpi.govt.nz/dmsdocument/14008-tai-poutini-west-coastgrowth-study-summary-report>

<sup>48</sup> NZTA (2024). Regional summary West Coast Te Tai o Poutini – NLTP 2024–27. <https://www.nzta.govt.nz/assets/planning-and-investment/nltp/2024/docs/regional-summaries/west-coast-regional-summary-nltp-2024-27.pdf>

<sup>49</sup> Ministry of Transport (2017). Safety – annual statistics. <https://www.transport.govt.nz/statistics-and-insights/safety-annual-statistics>

<sup>50</sup> West Coast Regional Council (2024). Regional Land Transport Plan 2021–2031. <https://www.wcrc.govt.nz/publications/transport-plans/regional-land-transport-plan>



## Improving transport accessibility for all communities

The transport system of the West Coast struggles to provide rural and remote communities with reliable connections to Greymouth, the main centre in the region, and beyond. It's essential that young people can access education and work; senior residents need access to social activities as well as health and social services.

Without improving transport accessibility through investment in alternatives such as active modes, the high reliance on private vehicles and the corresponding access challenges will continue, including:

- creating difficulties for those without easy access to, and use of, a private vehicle to fully participate in society
- placing significant pressure on household budgets to meet the high costs of car ownership and use
- limiting people's ability to travel in a way that best meets their needs because of poor travel choice.

## State highway hotspots

The following data sets have been overlaid to identify 'hotspots' (cumulative deficiencies) on the state highway network:

- **Reliability:** Measured by average annual daily traffic (AADT), which calculates the total number of vehicles, including heavy vehicles, passing through traffic count sites. High to medium reliability issues are identified when highways frequently operate at or near their capacity of 20,000 vehicles per day.
- **Resilience:** Assessed by examining the risk of disruptions across the state highway network over the past 12 years.
- **Safety:** Derived from the NZTA Collective Risk Map, which uses historical crash data from 2019 to 2023 to identify areas with higher accident risks.

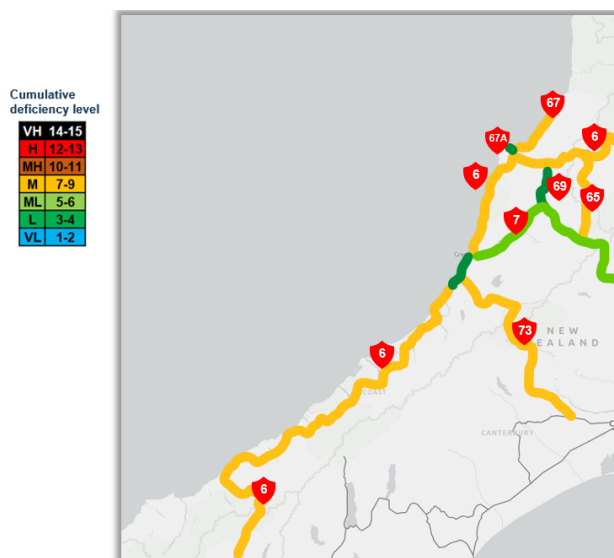


Figure 3: Cumulative deficiencies across state highways in the West Coast region (source: NZTA data<sup>51</sup>)

<sup>51</sup> Analysis of NZTA National Resilience Assessment Tool (NRAT), NZTA average annual daily traffic and NZTA cumulative risk using DSI data from 2019 to 2023.

## Medium or low cumulative deficiencies

The West Coast's state highways have no road sections that have cumulative deficiency ratings of higher than medium.

The West Coast region relies heavily on the state highway network and Midland Rail Line to connect communities and move freight and people. SH6 and SH73 are under increasing pressure from greater storm intensity and unstable ground. Road network closures isolate the West Coast from neighbouring regions, communities from each other, and disrupt visitor access to key destinations.<sup>52</sup>

SH6 from Greymouth to Hokitika and SH73 from Christchurch to the West Coast have been identified as regionally strategic corridors of the strategic network. SH73 and SH7 provide the main trans-alpine connections to the east coast and Christchurch, but both have resilience concerns and sections of these roads have multiple detour route restrictions that would impact freight movements between the east and west coasts.

**SH6** in the West Coast region makes up the transport artery stretching from Haast to Westport and further north to Nelson. This highway is highly susceptible to hydrological and geological hazards such as ice, rockfalls, landslides, and flooding. The rugged terrain and heavy rainfall significantly increase the risk of landslides. Despite its low traffic volumes, safety remains a major concern because of the high number of deaths and serious injuries (DSIs) along this scenic route. The route is frequented by visitors, tourists, heavy freight vehicles, and residents. Factors contributing to its poor safety record include inappropriate speeds on high-risk urban and rural roads, and poor driver behaviour. Additionally, there is ongoing concern for cyclists and motorcyclists given the high-speed environment.<sup>53</sup>

There are also ongoing concerns about the long-term viability of SH6 near Franz Josef as a result of the threat posed by the glacier-fed Waiho River. The West Coast Regional Council has proposed moving the highway south of the township to mitigate the risk of flooding. Other challenges include weather-related disruptions because of the area being prone to heavy rainfall, which often leads to slips and road closures. This pattern of weather-related disruptions is likely to continue, affecting the reliability of the highway. The continuous heavy rain and the resulting damage require ongoing maintenance and repairs. This can lead to frequent closures and delays as crews work to clear slips and ensure the road's safety.<sup>54</sup>

**SH73** is another vital corridor for the West Coast, linking it to Canterbury. This route is essential for tourists, residents, and freight movement. During winter, especially through alpine regions such as Arthur's Pass, SH73, can experience hazardous conditions such as snow and ice. It's also vulnerable to geological risks, including the potential rupture of the Alpine Fault.<sup>55</sup>

## Planned or committed initiatives

Some of the initiatives to address the resilience issues for the region include retaining structures and rockfall protection. For more significant resilience issues such as the flooding challenges at Franz Josef from the Waiho River, the development of master-planning and a supporting transport programme is proposed, but has not been initiated. The West Coast Regional Council is investigating a number of options to mitigate flooding of this river at the township, some of which may involve the

---

<sup>52</sup> West Coast Regional Council (2024). Regional Land Transport Plan 2021–2031. <https://www.wcrc.govt.nz/publications/transport-plans/regional-land-transport-plan>

<sup>53</sup> West Coast Regional Council (2024). Regional Land Transport Plan 2021–2031. <https://www.wcrc.govt.nz/publications/transport-plans/regional-land-transport-plan>

<sup>54</sup> NZTA (2024). Rain continuing SH6: Franz Josef to Fox Glacier remains closed, rest of highway to Haast closed today and overnight. <https://nzta.govt.nz/media-releases/rain-continuing-sh6-franz-josef-to-fox-glacier-remains-closed-rest-of-highway-to-haast-closed-today-and-overnight/>

<sup>55</sup> West Coast Regional Council (2024). Regional Land Transport Plan 2021–2031. <https://www.wcrc.govt.nz/publications/transport-plans/regional-land-transport-plan>

realignment of SH6. There are currently no decisions or plans to realign the state highway in the RLTP.

The state highway maintenance, operations, and renewals programme proposes investment in activities to restore the condition of the network and service levels. The programme includes:

- increasing drainage renewals to better deal with the effects of climate change
- increasing safety through the renewal of barriers, safety markings, and digital safety devices

Further investigation may be required to understand the future resilience pressures on the SH6, SH65 and SH73 corridors and whether normal maintenance, operations and renewals (MOR) activities will be sufficient to maintain the required level of performance over the next 30 years, particularly given the lack of suitable detour routes for many corridors in this region. Across the local road network, a number of transport assets are reaching, or have reached, the end of their economic life. Bridges pose a particular problem, and with high rainfall and an extensive network of streams and rivers, communities are particularly reliant on these assets.<sup>56</sup> Breaks in the network have substantial impacts on the economic, social and cultural wellbeing of the West Coast's communities.

## Focusing effort

Note: this section has a high-level strategic focus; we'll develop more specificity in future iterations of the evidence pack.

Based on the preceding sections and consideration of regional investment priorities identified in regional plans, the following list of areas of investment focus have been identified.

## Longer-term investment focus

### Resilience

- Investigate options for critical transport corridors away from high-risk areas in the face of natural hazards such as relocation and extension of routes – this includes working with communities to identify plans for when to defend, accommodate, or retreat.
- Identify, plan and maintain alternate routes with appropriate level of service to support community resilience and safe movement of freight.
- Develop a plan for maintaining, operating, and replacing end-of-life infrastructure.
- Develop response plans for an Alpine Fault magnitude 8 event (AF8) impacting the regional transport system.

### Transport connectivity

- Plan for investment on filling gaps in the regional cycle network and maintenance of existing trails to ensure safety.
- Continue to make changes to the allocation of space on existing roads and streets to enable and encourage mode shift to public transport, walking, and cycling.
- Explore opportunities for inter-regional public transport to enhance connectivity.

### Economic and urban development

- Continue to align transport investments with urban development plans – supporting, enabling, and encouraging growth and development in areas that have good travel choices and shorter trip lengths – such as the Greymouth Regeneration Plan.
- Explore opportunities to move to a more multi-modal freight system with greater use of rail and coastal shipping.

---

<sup>56</sup> West Coast Regional Council (2024). Regional Land Transport Plan 2021–2031. <https://www.wcrc.govt.nz/publications/transport-plans/regional-land-transport-plan>

- Continued investment in strategic infrastructure projects to support long-term regional growth and prosperity.

### **Safety and environment**

- Continue to invest in safety infrastructure, education, enforcement, and incentives that significantly reduce harm caused by the region's transport system, especially on key tourist routes.
- Continue to reduce the environmental impact of the maintenance, operations and improvement across the transport network including waste minimisation and resource efficiency.

### **Community and accessibility**

- Work with iwi/hapū partners to improve or maintain, as appropriate, physical access to marae, papakāinga, wāhi tapu, and wāhi taonga.
- Continue to improve the design and provision of transport infrastructure and services to meet the needs of people of all ages and abilities, focusing on communities with unmet needs.
- Explore opportunities to support the mobile or digital delivery of essential services.

## **Short-term investment focus**

Projects in the shorter term typically will involve low-cost, low-risk, high-effectiveness improvements and projects that 'set the scene' to incrementally enable (or transition to) longer-term outcomes.

Steps to make progress towards transport outcomes in a more efficient and cost-effective way include:

- renewing the focus on small-scale projects
- getting more from existing infrastructure, by making the most of existing networks, services, and demand management
- reallocating existing road space, where appropriate, particularly for public transport and active modes
- seeking continuous improvement in network resilience through maintenance, renewals, and low-cost, low-risk investments
- influencing travel behaviour and growth patterns.

### **Resilience**

- Develop an understanding of routes that provide critical connections, the conditions of these, the pressures, and the level of investment needed to address impacts.
- Investigate whether MOR will be sufficient to maintain the required level of performance over the next 30 years.
- Identify transport assets and infrastructure at risk of natural hazards and impacts of climate change, identifying priorities for network resilience and options for alternate routes less likely to be disrupted.

### **Transport connectivity**

- Connection of walking and cycling networks and expansion of associated facilities in urban areas such as Greymouth and Westport.
- Maintain and improve efficiency of interregional road and rail connections, especially east to Christchurch on SH73 and Midland Rail Line.

### **Economic and urban development**

- Support multi-modal, resilient, reliable, and efficient freight and business travel around key parts of the network, especially interregional connections, and key freight and industrial hubs.

- Plan for transport infrastructure and services that improve access to tourist destinations, such as Franz Josef, Dolomite Point, Croesus Track, and Ōpārara Arches.
- Review the Regional Cycle Trail Strategy.
- Implement the transport components of the Franz Josef and Greymouth regeneration plans, – enabling smaller projects such as place-based activation to attract local people and visitors.

### **Safety and environment**

- Continue safety improvements that target high-risk intersections, run-off road crashes, key visitor routes, and head-on crashes on high-risk rural roads.
- Address safety challenges in non-protected areas of existing cycling and walking networks.
- Reduce the environmental impact of the maintenance, operations and improvement across the transport network by supporting and enabling low-emission, low-carbon and low-impact policies, practices, and standards.

### **Community and accessibility**

- Expand and improve walking and cycling facilities in smaller towns.
- Improve access to opportunities for iwi Māori, focusing on enabling papakāinga development and improving access to sites of cultural significance with high safety risk.
- Improve travel choice and access to social and economic opportunities, focusing on low income/low access areas.
- Continue and develop community transport/on-demand services where appropriate and develop a community transport policy and funding framework.

## **Potential interventions**

As part of the PIE programme, NZTA is developing the Intervention Catalogue (IC) tool, which compiles a wide range of empirical data relating to the implementation of transport projects and how effective they have been in achieving the intended outcomes. We'll continue to add to this over time, using data from benefit realisation associated with the investment logic mapping (ILM) process.

An AI interface for supporting queries and providing relevant evidence is currently being investigated.

An example of how exploratory use of this tool might be used to match potential interventions to deficiencies to understand and compare the likely relative effectiveness is included in [Appendix B](#).

The process seeks to avoid potential pitfalls that might occur during option formulation:

- an over-reliance on preconceived ideas
- a focus on the more obvious supply-side measures, such as infrastructure and management rather than demand-side measures such as regulation and pricing
- a general lack of awareness of the wider range of policy measures available
- lack of evidence of the performance of those measures in other contexts
- lack of a formalised or consistent approach for option generation.

The example tables included in [Appendix B](#) take the focus areas and related transport issues from the previous section of this report and maps them to some relevant interventions from the KonSULT knowledgebase.

### **Insights**

Using IC is only intended to inform the option formulation process. It does not replace the need for judgement, but rather provides a set of empirical evidence that supports decisions (along with additional information sources).

The tables in [Appendix B](#) indicate the following:

- Most interventions related to addressing the identified West Coast deficiencies are likely to be cost effective.
- Most interventions have mostly a positive (or neutral) effect across all outcomes, much more so than negative.
- Some of the most effective interventions for West Coast indicated by IC include:
  - new infrastructure (safe systems)
  - new infrastructure and maintenance (resilience)
  - walking and cycling network improvements.

### **Short-list of most effective interventions**

It's intended that the information and tools provided above will assist consideration and development of projects to be included in the next RLTP and NLTP.

It provides a starting point for us to understand regional issues and investment opportunities, which can then be expanded upon through further engagement between approved organisations and NZTA to increase the likelihood of suitable projects being submitted for funding via the NLTP.



## Appendix A: Data sources for the strategic measures

This appendix references all relevant data sources and assumptions for the [14 strategic measures](#) reported within each regional chapter.

Because this is the first attempt at providing the evidence pack, and the development of the associated tools and processes under the Planning and Investment Evidence base (PIE) programme is still ongoing, we do not yet have the full capability to report outputs for all measures, particularly for future years. In these instances, we have noted that the data is 'not available' by using the 'N/A' abbreviation as a placeholder until such time this can be addressed by a subsequent version of the evidence pack.

Similarly, the process has identified the need for better understanding and reporting of data quality ratings, version control and internal consistency (that is, a single source of truth). These are all things we intend to improve in subsequent releases.

Bearing the above in mind, we have adopted the following general convention for this version in how we report numbers:

- For large numbers, only report 3–4 significant figures (and using rounding units of thousands or millions).
- For small numbers (including percentages), report to one decimal place by default, but make exceptions where appropriate (for example where more or less detail is required to make meaningful comparisons).

The focus is on convenience and the useability of the data. As such, it doesn't necessarily imply a particular level of accuracy (especially for future year forecasts, which have a great deal of uncertainty associated with them).

Each section below (grouped by outcome) provides data for all regions to allow comparison in terms of how each region contributes to the national total. It also provides any important caveats and limitations associated with each of the measures for that outcome.

### Healthy and safe people

To understand the current and future safety risk both at the regional and national level, we calculated deaths and serious injuries, personal risk and collective risk as shown in the following table. More details can be found in the [Land Transport Benefits Framework](#).

Benefit framework measure	Units
1.1.1 Collective risk (crash density)	Average annual fatal and serious per kilometre of road section
1.1.3 Deaths and serious injuries (DSIs)	Number of DSIs (annual)
1.1.4 Personal risk (crash rate)	Average annual DSI per 100 million vehicle kilometres

#### Notes, caveats and data limitations:

- Data for the number of deaths and serious injuries (DSIs) is sourced from the Crash Analysis System (CAS) database managed by NZTA.
- Regional VKTs and network length in kilometres is sourced from the NZTA official data published for financial year 2023/24.<sup>57</sup>
- Generally, DSI measures are calculated as multi-year rolling average. However, because of time and resource constraints the following data is for the financial year 2023/24 only.
- Future year growth factor is based on regional VKT change. This method to calculate this change is discussed in more detail for the 'E.4 Environmental sustainability' section later in this appendix.

<sup>57</sup> <https://www.nzta.govt.nz/planning-and-investment/learning-and-resources/transport-data/data-and-tools/>

- It is assumed that crash rates remain constant over time. This is consistent with safety expert advice that application of crash trend adjustment factors for long term future predictions may no longer be supported by evidence.
- Future year DSIs were estimated based on the regional change on VKT (all vehicles) between 2023 and 2048 adopted for the GHG emissions measure (8.1.1). This assumes the crash rate (per VKT) remains constant (that is, no crash trend reduction factors applied).

Region	Current 2023/24			Future 2048		
	DSIs #	Per km	Per 100 million VKT	DSIs #	Per km	Per 100 million VKT
01 – Northland	181	0.027	7.783	176	0.026	7.554
02 – Auckland	593	0.073	4.267	924	0.114	6.651
03 – Waikato	416	0.035	6.372	501	0.042	7.678
04 – Bay of Plenty	184	0.038	5.321	210	0.044	6.059
05 – Gisborne	33	0.015	7.779	37	0.016	8.737
06 – Hawke's Bay	125	0.027	7.005	145	0.031	8.135
07 – Taranaki	82	0.021	6.293	97	0.024	7.429
08 – Manawatū-Whanganui	234	0.026	7.718	231	0.026	7.619
09 – Wellington	171	0.039	4.671	230	0.052	6.289
10 – Top of the South	117	0.027	6.868	151	0.035	8.848
11 – Canterbury	346	0.021	5.007	480	0.030	6.942
12 – West Coast	43	0.014	7.548	43	0.014	7.545
13 – Otago	137	0.013	4.799	142	0.013	4.968
14 – Southland	51	0.007	3.877	53	0.007	4.024
15 – Chatham Islands	0	0.000	0.000	0	0.000	0
<b>National</b>	<b>2713</b>	<b>0.025</b>	<b>5.451</b>	<b>3419</b>	<b>0.035</b>	<b>5.055</b>

## Infrastructure risk rating (safety)

We calculate strategic measure 1.2.1 Road assessment rating to understand the current situation of infrastructure risk both at regional and national level. This measure can be used for any safety-related investment benefits, particularly those that target road infrastructure to improve safety. It is a comprehensive measure that considers land use, road type, alignment, average annual daily traffic (AADT), intersection density, land and shoulder width, roadside hazards and access density. More details can be found in the [Land Transport Benefits Framework](#).

Benefit framework measure	Units
1.2.1 Road assessment rating – roads	Average infrastructure risk rating

### Notes, caveats and data limitations:

- Data to calculate the regional infrastructure risk rating (IRR) measure in the following table is sourced from Megamaps, which is a geospatial platform managed by NZTA.<sup>58</sup>
- IRR data used to calculate regional and national measure values in the following table was calculated in Megamaps in 2024. The raw data used is for the period 2019–23.
- The data in Megamaps is for each road segment, intersection or corridor. We have aggregated it to calculate regional percentages under each risk band.

Region	High	Medium-high	Medium	Low-medium	Low
01 – Northland	45.77%	26.44%	18.74%	8.34%	0.71%
02 – Auckland	14.92%	17.54%	48.12%	13.18%	6.24%
03 – Waikato	21.40%	25.42%	34.39%	15.15%	3.64%
04 – Bay of Plenty	17.10%	20.74%	37.82%	19.35%	4.99%
05 – Gisborne	50.43%	19.93%	21.93%	7.50%	0.21%
06 – Hawke's Bay	33.47%	25.30%	29.79%	9.16%	2.28%
07 – Taranaki	28.83%	24.08%	33.13%	13.13%	0.83%
08 – Manawatū-Whanganui	41.81%	19.13%	25.67%	12.43%	0.96%
09 – Wellington	17.98%	19.51%	41.67%	13.62%	7.22%
10 – Top of the South	33.70%	23.83%	28.06%	12.94%	1.47%
11 – Canterbury	10.87%	29.16%	42.29%	16.36%	1.32%
12 – West Coast	17.75%	29.97%	38.04%	13.61%	0.63%
13 – Otago	21.83%	37.95%	26.55%	12.63%	1.04%
14 – Southland	6.99%	41.27%	37.99%	13.34%	0.42%
<b>National%</b>	<b>23.21%</b>	<b>2.29%</b>	<b>13.50%</b>	<b>34.25%</b>	<b>26.75%</b>

<sup>58</sup> <https://spatial.nzta.govt.nz/apps/megamaps/>

## Resilience and security

This transport outcome is about minimising and managing the risks from natural and human-made hazards, anticipating and adapting to emerging threats, and recovering effectively from disruptive events. We intended to use strategic measure 4.1.1 and 4.1.2 from the [Land Transport Benefits Framework](#) to understand the resilience and security situation at national and regional level. However, we don't currently have data to calculate measure 4.1.1, so this time around we have only calculated measure 4.1.2. The intent of the measure 4.1.2 is to allow for description and measurement of the risk to level of service by unplanned disruption (including earthquakes, storms, volcanos and tsunamis). This measure is generally used for any investment that focuses on maintaining or increasing the resilience of the transport network.

Benefit framework measure	Units
4.1.1 Availability of a viable alternative to high-risk and high-impact route	Percentage of high-risk, high-impact route with a viable alternative
4.1.2 Level of service and risk	Number of identified sites in region by combined risk rating (future, geological and hydrological)

### Notes, caveats and data limitations:

- The data for the following measure is sourced from the National Resilience Assessment Tool (NRAT) managed by NZTA.<sup>59</sup>
- The following table shows the regional number of resilience risks on state highways under each risk band. This includes hydrological, geological and future risks.
- 'No rating' is for considered risk sites that have not yet been rated.
- There is no easy way to currently calculate future projections for this measure, but we are working on the capability to do so.

Regions	Critical	High	Moderate	Low	No rating
01 – Northland	29	84	276	171	169
02 – Auckland	5	13	29	41	1
03 – Waikato	20	175	212	174	149
04 – Bay of Plenty	16	64	153	121	67
05 – Gisborne	1	7	35	49	74
06 – Hawke's Bay	18	123	72	30	143
07 – Taranaki	0	11	9	0	98
08 – Manawatū-Whanganui	1	11	9	8	8
09 – Wellington	39	37	25	118	1
10 – Top of the South	9	51	59	177	91
11 – Canterbury	32	88	57	195	46
12 – West Coast	34	49	21	34	37
13 – Otago	26	84	86	247	172
14 – Southland	27	23	18	28	14
<b>National</b>	<b>257</b>	<b>820</b>	<b>1061</b>	<b>1393</b>	<b>1070</b>

<sup>59</sup> <https://national-resilience-assessment-tool-nzta.hub.arcgis.com/>

## Economic prosperity

This transport outcome is about supporting economic activity via local, regional, and international connections, with efficient movements of people and products. We calculated the following strategic measures from the [Land Transport Benefits Framework](#) to measure the economic prosperity outcomes at both regional and national level.

Benefit framework measure	Units
5.1.2 Travel time reliability – motor vehicles (note for this evidence pack, the data only relates to state highway traffic monitoring system (TMS) sites)	Calculated using coefficient of variation (CoV); standard deviation of travel time divided by average minutes travel time Rate: Low <0.3, Medium 0.3–0.6, High >0.6)
5.1.3 Travel time delay	Difference between average travel time during AM peak and average travel time during the Inter Peak in minutes per kilometre (by mode) as a percentage
5.2.2 Freight – mode share value	Percentage of value for each mode
5.2.3 Freight – mode share weight	Percentage of weight for each mode

### Notes, caveats and limitations:

- Data for travel time reliability and delay measures is sourced from the National Network Performance (NNP) platform managed by NZTA.
- The sources used to calculate following measures is limited to the TMS sites only – that is, for state highways. In future, as more data is available in NNP for local roads, we intend to calculate using extensive local and state highway roads. Additionally, NNP will be able to assess both travel time delay and travel time reliability.
- The data for 5.1.2 Travel time reliability and 5.1.3 Travel time delay is for a typical day.
- Where we have gained access to regional model origin–destination data (for Auckland, Waikato, Wellington and Christchurch), we have used this to estimate current and future values of travel time for all available modes.
- Measure 5.2.2 Freight – mode share value has been selected as one of the 14 strategic measures but currently, there is insufficient data to reliably calculate this. Therefore, the data table for this measure remains unpopulated as a placeholder.
- Measure 5.2.3 Freight – mode share weight would ideally include coastal shipping but currently only includes road and rail modes.
- Future road freight is based on the same data used to forecast heavy commercial vehicle (HCV) VKT (also used for other measures) combined with average cargo weight from weigh-in-motion (WiM) sites (collected for the North Island only, but also applied to the South Island due to lack of data from the South Island). This data covers seven years and shows a trend of average load sizes decreasing over time. This trend line was used to estimate the 2048 average cargo weight (4615kg). Compared to the 2024 value (4822kg), this implies the average load size is projected to decrease by 7%. In contrast, national HCV VKT is projected to increase by 39% (2024 to 2048).
- The last seven years of rail freight net tonne-kilometres (NTK) by line segment has been provided by KiwiRail. This indicates that the amount of freight is reasonably steady over this period (with a small decline over the last few years). Based on the overall trend, we have assumed future year (2048) NTK will remain the same as current day (2024)
- A discrepancy in the rail data has been noted, where a 27km section of the network is missing from the calculations. This is possibly the section between Palmerston North and Woodville, which has been noted for further follow up.

### 5.1.2 Travel time reliability – motor vehicles

Region	Daily (CoV)			Peak time (CoV)		
	Low	Medium	High	Low	Medium	High
01 – Northland	96.43%	3.57%	0.00%	88.24%	0.00%	11.76%
02 – Auckland	96.67%	2.50%	0.83%	78.57%	9.18%	12.24%
03 – Waikato	94.59%	1.35%	4.05%	95.00%	0.00%	5.00%
04 – Bay of Plenty	100.00%	0.00%	0.00%	80.56%	19.44%	0.00%
05 – Gisborne	96.30%	3.70%	0.00%	100.00%	0.00%	0.00%
06 – Hawke's Bay	98.95%	1.05%	0.00%	65.38%	34.62%	0.00%
07 – Taranaki	94.74%	5.26%	0.00%	69.44%	16.67%	13.89%
08 – Manawatū-Whanganui	92.11%	7.89%	0.00%	82.56%	8.14%	9.30%
09 – Wellington	92.37%	6.78%	0.85%	67.90%	30.86%	1.23%
10 – Top of the South	100.00%	0.00%	0.00%	86.49%	10.81%	2.70%
11 – Canterbury	94.39%	3.96%	1.65%	73.98%	16.84%	9.18%
12 – West Coast	96.30%	1.23%	2.47%	98.08%	0.00%	1.92%
13 – Otago	92.59%	6.79%	0.62%	75.56%	17.78%	6.67%
14 – Southland	93.27%	5.77%	0.96%	71.43%	21.43%	7.14%
<b>National</b>	<b>95.30%</b>	<b>3.84%</b>	<b>0.86%</b>	<b>77.34%</b>	<b>15.54%</b>	<b>7.12%</b>

### 5.1.3 Travel time delay

Region	Peak (mins/km)	Inter-peak (mins/km)	Difference (mins/km)	%Change
01 – Northland	0.78	0.85	0.7	8.40%
02 – Auckland	0.77	0.86	0.8	10.23%
03 – Waikato	0.79	0.87	0.8	9.17%
04 – Bay of Plenty	0.69	0.76	0.6	8.18%
05 – Gisborne	0.75	0.77	0.2	3.30%
06 – Hawke's Bay	0.79	0.87	0.7	9.15%
07 – Taranaki	0.80	0.88	0.7	8.46%
08 – Manawatū-Whanganui	0.73	0.78	0.4	5.72%
09 – Wellington	0.83	1.00	0.2	16.94%
10 – Top of the South	0.82	0.84	0.1	1.98%
11 – Canterbury	0.75	0.77	0.2	3.46%
12 – West Coast	0.74	0.77	0.2	3.13%
13 – Otago	0.74	0.78	0.3	4.69%
14 – Southland	0.73	0.76	0.2	3.23%
<b>National</b>	<b>0.76</b>	<b>0.83</b>	<b>0.6</b>	<b>8.17%</b>



### 5.2.3 Freight – mode share weight – base year 2024

Region	Road (m NKT/yr)	Rail (m NKT/yr)	Total (m NKT/yr)	Road (%)	Rail (%)
01 – Northland	912	17	929	98%	2%
02 – Auckland	2904	132	3036	96%	4%
03 – Waikato	5016	751	5767	87%	13%
04 – Bay of Plenty	2208	534	2742	81%	19%
05 – Gisborne	301	0	301	100%	0%
06 – Hawke's Bay	1120	31	1152	97%	3%
07 – Taranaki	603	59	661	91%	9%
08 – Manawatū-Whanganui	1824	646	2470	74%	26%
09 – Wellington	1004	102	1106	91%	9%
10 – Top of the South	1193	60	1253	95%	5%
11 – Canterbury	4045	563	4608	88%	12%
12 – West Coast	409	313	722	57%	43%
13 – Otago	1396	220	1616	86%	14%
14 – Southland	776	73	849	91%	9%
15 – Chatham Islands	0	0	0	100%	0%
<b>Grand total</b>	<b>23,712</b>	<b>3,500</b>	<b>27,212</b>	<b>87%</b>	<b>13%</b>

### 5.2.3 Freight – mode share weight – future year 2048

Region	Road (m NKT/yr)	Rail (m NKT/yr)	Total (m NKT/yr)	Road (%)	Rail (%)
01 – Northland	912	17	929	98%	2%
02 – Auckland	2,904	132	3,036	96%	4%
03 – Waikato	5,016	751	5,767	87%	13%
04 – Bay of Plenty	2,208	534	2,742	81%	19%
05 – Gisborne	301	0	301	100%	0%
06 – Hawke's Bay	1,120	31	1,152	97%	3%
07 – Taranaki	603	59	661	91%	9%
08 – Manawatū-Whanganui	1,824	646	2,470	74%	26%
09 – Wellington	1,004	102	1,106	91%	9%
10 – Top of the South	1,193	60	1,253	95%	5%
11 – Canterbury	4,045	563	4,608	88%	12%
12 – West Coast	409	313	722	57%	43%
13 – Otago	1,396	220	1,616	86%	14%
14 – Southland	776	73	849	91%	9%
15 – Chatham Islands	0	0	0	100%	0%
<b>Grand total</b>	<b>23,712</b>	<b>3,500</b>	<b>27,212</b>	<b>87%</b>	<b>13%</b>

## Environmental sustainability

This transport outcome is about transitioning to net zero carbon emissions, and maintaining or improving biodiversity, water quality and air quality. We calculated following strategic measures from the [Land Transport Benefits Framework](#) to the measure the economic prosperity outcomes at both regional and national level.

Benefit framework measure	Units
8.1.1 Greenhouse gas emissions (all vehicles)	Annual tonnes of CO <sub>2</sub> equivalents (CO <sub>2</sub> -e) emitted
8.1.3 Light vehicle use impacts	Annual light vehicle kilometres travelled (light VKT)

### Notes, caveats and limitations:

- Current year data for VKT is sourced from NZTA's [open data portal](#).
- Future light national VKT projections have been sourced from the NZTA 2024 Light VKT projection models. These are based on Stats NZ population growth and forecasts for GDP and fuel prices (mid-range assumptions have been adopted for this evidence pack).
- Future regional light vehicle VKT distribution is based on research work done by Beca (VKT and GHG emissions baseline report – [NZTA research note 008](#) September 2022). This assumes the base year light VKT per capita remains unchanged and uses population projection to estimate light VKT within each territorial local authority (TLA). The results are aggregated to spatial areas and adjusted to reconcile with the Ministry of Transport (MoT) observed and projected national totals. It uses base and projected light vehicle fleet GHG emissions factors from the [Vehicle Fleet Emission Model](#) (VFEM) to calculate GHG emissions for the baseline spatial areas. The report year 2035 (future) VKT values (by region) have been adjusted (scaled) to 2048 national light vehicle (LV) totals.
- Future year regional heavy vehicle VKT distribution has been calculated using growth factors comprising trend data, Stats NZ medium population forecast and Ministry of Business, Innovation and Employment (MBIE) GDP forecast data. This is a placeholder calculation pending further work on HCV demand forecasting currently being developed (using this general approach) as part of the PIE programme.
- GHG emissions have been estimated by applying light and heavy VKT to [Vehicle Emissions Prediction Model](#) (VEPM) (v7.0) emission rates (for current and future years) using the default MoT Vehicle Fleet Model (VFM) assumptions within VEPM (for each year) and average vehicle speeds from NNP or regional transport models (Auckland, Waikato, Wellington and Christchurch).
- Estimates of VKT are key inputs to multiple measures (such as vehicle emissions (affecting both health and environmental measures), DSIs, freight etc. Care has been taken to ensure consistency at the national, regional and local levels.

### 8.1.1 Greenhouse gas emissions (all vehicles)

Region	Current 2024	Future 2048	Change	% Change	Contribution
01 – Northland	0.61	0.27	-0.35	-57%	4%
02 – Auckland	3.58	2.19	-1.38	-39%	26%
03 – Waikato	2.00	1.36	-0.64	-32%	14%
04 – Bay of Plenty	1.01	0.63	-0.38	-38%	7%
05 – Gisborne	0.13	0.07	-0.06	-48%	1%
06 – Hawke's Bay	0.52	0.30	-0.22	-42%	4%
07 – Taranaki	0.35	0.19	-0.16	-46%	3%
08 – Manawatū-Whanganui	0.87	0.49	-0.38	-44%	6%
09 – Wellington	0.93	0.45	-0.48	-52%	7%
10 – Top of the South	0.51	0.36	-0.15	-30%	4%
11 – Canterbury	1.98	1.26	-0.71	-36%	14%
12 – West Coast	0.17	0.10	-0.08	-44%	1%
13 – Otago	0.78	0.40	-0.38	-48%	6%
14 – Southland	0.38	0.21	-0.17	-46%	3%
15 – Chatham Islands	0.002	0.001	-0.001	-39%	0.02%
<b>National</b>	<b>13.83</b>	<b>8.29</b>	<b>-5.54</b>	<b>-40%</b>	<b>100%</b>

### 8.1.3 Light vehicle use impacts

Region	Current 2024	Future 2048	Change	% Change	Contribution
01 – Northland	2172	2075	-97	-4%	5%
02 – Auckland	13137	20504	7367	56%	29%
03 – Waikato	5597	6514	918	16%	12%
04 – Bay of Plenty	3056	3349	293	10%	7%
05 – Gisborne	369	420	52	14%	1%
06 – Hawke's Bay	1581	1810	229	14%	3%
07 – Taranaki	1199	1397	198	17%	3%
08 – Manawatū-Whanganui	2702	2523	-179	-7%	6%
09 – Wellington	3488	4746	1258	36%	8%
10 – Top of the South	1484	1854	370	25%	3%
11 – Canterbury	6182	8583	2402	39%	14%
12 – West Coast	494	476	-18	-4%	1%
13 – Otago	2610	2624	14	1%	6%
14 – Southland	1175	1182	7	1%	3%
15 – Chatham Islands	5	4	-0.4	-7.9%	0%
<b>National</b>	<b>45250</b>	<b>58062</b>	<b>12812</b>	<b>28%</b>	<b>100%</b>

## Inclusive access

This transport outcome is about enabling all people to participate in society through access to social and economic opportunities, such as work, education and health care. We calculated the 10.2.1 and 10.3.1 strategic measures from the [Land Transport Benefits Framework](#) to measure the inclusive access outcome both at the national and regional level.

Benefit framework measure	Units
10.2.1 People – mode share	Percentage by mode (Census (2023) journey to work and education)
10.3.1 Access to key social destinations (all modes)	Number of jobs (x1000) accessible by mode in AM peak (car 40 min, PT 45 min, cycle 45 min) and distance from city centre (km)

### Notes, caveats and limitations:

- There is a limited information about measure 10.2.1 in the [Land Transport Benefits Framework measures manual](#) – that is, its intent, scope, forecasting methods etc are not defined yet.
- Mode share data, that is main means of travel to work and education, is sourced from census 2023 outputs produced by Stats NZ.<sup>60</sup>
- The data for all public transport (PT) modes (buses, trains and ferries) is aggregated together.
- Where we have gained access to regional model origin–destination data (for Auckland, Waikato, Wellington and Christchurch), we’ve used this to estimate current and future values of 10.2.1 People – mode share based on modelled relative changes applied to the base year census values.

### 10.2.1 People – mode share

Region	%Car	%PT	%Cycle	%Peds
01 – Northland	91.00%	1.33%	0.99%	6.67%
02 – Auckland	77.81%	11.29%	1.32%	9.58%
03 – Waikato	86.34%	2.69%	2.49%	8.48%
04 – Bay of Plenty	87.36%	2.06%	3.37%	7.22%
05 – Gisborne	89.78%	0.43%	2.54%	7.25%
06 – Hawke’s Bay	88.12%	0.99%	2.96%	7.93%
07 – Taranaki	87.18%	1.25%	2.91%	8.66%
08 – Manawatū-Whanganui	86.33%	1.77%	2.60%	9.30%
09 – Wellington	63.97%	18.40%	2.98%	14.64%
10 – Top of the South	80.14%	1.09%	7.53%	11.24%
11 – Canterbury	85.26%	0.17%	3.27%	11.30%
12 – West Coast	79.75%	4.44%	6.27%	9.54%
13 – Otago	73.35%	4.38%	3.77%	18.50%
14 – Southland	87.70%	0.70%	3.40%	8.21%
Auckland city	77.78%	11.30%	1.32%	9.59%
Hamilton city	82.96%	4.96%	3.08%	9.01%

60

[https://explore.data.stats.govt.nz/?fs\[0\]=2023%20Census%2C0%7CTransport%23CAT\\_TRANSPORT%23&pg=0&fc=2023%20Census&bp=true&snb=9](https://explore.data.stats.govt.nz/?fs[0]=2023%20Census%2C0%7CTransport%23CAT_TRANSPORT%23&pg=0&fc=2023%20Census&bp=true&snb=9)

Region	%Car	%PT	%Cycle	%Peds
Tauranga city	85.33%	2.92%	4.65%	7.10%
Wellington city	48.62%	28.51%	3.59%	19.29%
Christchurch city	77.74%	5.84%	7.20%	9.22%
Queenstown-Lakes District	79.27%	4.13%	5.77%	10.83%
<b>National total</b>	<b>79.45%</b>	<b>7.46%</b>	<b>2.91%</b>	<b>10.19%</b>

## Accessibility to employment

### Notes, caveats and limitations:

- Data is sourced from the Accessibility Toolkit (ATK).
- It uses network-based travel times (by mode) between household locations and employment locations. This uses recorded travel times for general traffic, bus timetables for PT and road network distance with a constant average speed applied for cycles (the default used in OpenTripPlanner, which is 5m/s = 18km/h).
- Measure 10.3.1 currently estimates accessibility to employment rather than social destinations. Further work is progressing using ATK to also include access to social destinations, which will be included in subsequent versions of this evidence pack.
- ATK has been used to estimate future accessibility in a very limited way by only looking at changes associated with land-use growth based on population and employment sub-regional projections (while keeping base year travel times by mode). It may be possible to improve this in future releases, where other tools (currently being developed) can provide suitable inputs to ATK regarding future network performance (including travel times).

### 10.3.1 Access to key social destinations (all modes)

Region	Mode	Current year (2023)			Future year (2048)		
		0–5km	5–10km	10+km	0–5km	5–10km	10+km
01 – Northland	Car	31,292	30,536	35,034	36,807	35,913	40,486
	PT	16,850	5,845	869	19,200	7,465	1,311
	Cycle	29,138	19,854	2,377	34,068	24,541	3,369
02 – Auckland	Car	716,503	536,916	455,088	899,714	670,758	582,690
	PT	313,788	177,213	124,557	388,878	224,214	151,103
	Cycle	355,847	280,586	216,239	451,914	355,494	265,792
03 – Waikato	Car	133,357	133,999	213,804	176,632	177,837	276,406
	PT	69,881	25,929	9,321	95,049	33,744	12,351
	Cycle	104,923	82,607	16,567	140,886	112,340	21,034
04 – Bay of Plenty	Car	79,040	77,841	93,611	103,455	101,584	107,430
	PT	35,631	23,794	18,017	47,915	32,656	20,225
	Cycle	58,707	40,240	26,289	77,374	54,337	29,099
05 – Gisborne	Car	17,327	17,265	25,979	18,308	18,254	27,378
	PT	9,241	144	147	9,421	137	150
	Cycle	15,211	10,255	517	15,898	9,799	849
06 – Hawke's Bay	Car	72,436	71,160	165,625	82,291	81,101	186,660
	PT	18,570	12,495	21,930	20,305	13,607	26,451
	Cycle	27,802	26,148	59,881	30,745	29,448	70,751
07 – Taranaki	Car	36,869	36,779	81,917	41,180	40,985	91,527
	PT	17,946	6,379	3,989	19,839	7,537	4,939
	Cycle	27,594	21,814	5,315	30,784	26,806	6,171

08 – Manawatū-Whanganui	Car	63,400	60,858	116,324	70,215	68,118	129,915
	PT	42,455	8,809	12,769	47,710	12,863	14,373
	Cycle	49,725	27,467	15,275	55,486	31,480	16,815
09 – Wellington	Car	226,937	203,306	257,735	254,242	227,977	286,594
	PT	149,015	87,351	100,318	169,490	97,902	112,643
	Cycle	160,012	138,296	82,987	178,699	153,837	93,008
10 – Top of the South	Car	59,509	39,238	43,526	65,205	43,653	48,604
	PT	33,554	20,850	2,236	36,531	23,406	2,550
	Cycle	48,104	34,767	5,135	52,973	39,147	5,744
11 – Canterbury	Car	246,820	237,377	350,704	298,103	286,139	440,946
	PT	135,521	83,670	25,420	164,523	99,853	33,350
	Cycle	197,173	163,672	46,480	238,400	196,568	59,540
12 – West Coast	Car	6,225	6,455	14,589	5,843	6,196	13,893
	PT	3,757	183	1,862	3,445	210	2,326
	Cycle	5,537	4,664	3,015	5,099	4,604	3,432
13 – Otago	Car	59,213	58,364	112,598	62,075	61,521	128,941
	PT	45,898	27,674	13,916	48,301	33,897	16,699
	Cycle	53,343	41,614	12,458	55,959	47,303	15,473
14 – Southland	Car	32,733	33,106	69,145	34,463	34,638	71,342
	PT	20,598	10,281	2,169	21,320	13,138	2,138
	Cycle	27,027	22,387	4,685	28,399	26,232	4,374
National	Car	1,781,661	1,543,200	2,035,679	2,148,533	1,854,674	2,432,812
	PT	912,705	490,617	337,520	1,091,927	600,629	400,609
	Cycle	1,160,143	914,371	497,220	1,396,684	1,111,936	595,451

## Appendix B: Intervention Catalogue

As part of the PIE programme, NZTA is developing the Intervention Catalogue (IC) tool, which compiles a wide range of empirical data relating to the implementation of transport projects and how effective they have been in achieving the intended outcomes. We'll continue to add to this over time, using data from benefit realisation associated with the investment logic mapping (ILM) process.

An AI interface for supporting queries and providing relevant evidence is currently being investigated.

For this evidence pack, a limited subset of data (related to 80 interventions) based on the [KonSULT](#) knowledgebase maintained by the University of Leeds in the UK, on sustainable urban land use and transport has been made available to demonstrate how IC might be applied to explore and identify the effectiveness of various interventions as part of the option formulation process.

Effectiveness is reported using a simple qualitative 1–5 scale that is indicative rather than absolute, and results may vary based on context.

The screenshot in Figure 4 shows the interventions we extracted from the KonSULT knowledgebase. This data is available in the summary spreadsheet: [Extract-of-IC-KonSULT-data\(interventions-typology\).xlsx](#).

[illegible]

Figure 4: Extract of IC KonSULT data



We've used the data shown in Figure 4 to create a draft interactive tool ([Spreadsheet-deficiency-to-intervention-example.xlsx](#)) that allows users to explore the effectiveness and trade-offs associated with a range of interventions that are associated with a user-specified list of issues or deficiencies.

The tables shown in the screenshots below are examples of how the tool can be used (and is not necessarily recommending any of the interventions currently selected).

User Inputs	Intervention Catalogue	Intervention Catalogue	IC Lever	4) Select Area Type	5) Review likely effectiveness of si	Effectiveness	Cost
Issue/Deficiency	Intervention Group	IC Interventions			(1-5)	Min.	Max.
1) User to provide list of issues/deficiencies below	2) User drop down menus to explore available Groups	3) User drop down menus to explore Interventions in Group					
Consolidate growth, shorten trip lengths, co locating transport hubs with community services	Regulation (pricing and incentives)	Public transport fare reductions	Pricing	Area	3	0	0
Design and Planning - adaptable 'scenarios-based' (defend, accommodate, retreat), identify critical routes, improve operational responses to events	Spatial and place-based planning	Design and Planning	Resilience	Tier 1	0	0	0
perceived safety (incl. crime)	Deliver new or upgraded infrastructure and services	Safe system approach	Safe System	Tier 1	4	0	0
prioritise low risk low cost maintenance projects	Maintain and optimise existing networks and services	Maintaining the existing road network level of service	Infrastructure	Tier 1	3	0	1
Implement high quality improvements that bring about mode change	Maintain and optimise existing networks and services	Conversion of road capacity to shared and active modes	Optimisation	Tier 1	2	0	2
perceived safety (incl. crime)	Deliver new or upgraded infrastructure and services	Safe system approach	Safe System	Tier 1	4	0	0
rapid transport network	Spatial and place-based planning	Spatially integrated land use and transport networks	Multi-modal planning	Tier 1	4	0	1
Improved services	Deliver new or upgraded infrastructure and services	Fixed line mass public transport	Public transport	Tier 1	3	0	5
Road pricing	Regulation (pricing and incentives)	Time and distance based charges	Pricing	Tier 1	2	-4	0
PT Fares	Regulation (pricing and incentives)	Public transport fare reductions	Pricing	Tier 1	3	0	0
Road safety plans, safe speed limits, reduce dangerous behavior	Deliver new or upgraded infrastructure and services	Safe system approach	Safe System	Tier 1	4	0	0
Encourage Evs (low emission zones)	Maintain and optimise existing networks and services	Banning polluting vehicles from a defined area	Management	Tier 1	2	0	1
Encourage active modes	Deliver new or upgraded infrastructure and services	Networks for small, low powered, low speed transport devices	MAAS	Tier 1	4	0	1
Encourage active modes	Education and awareness	School based travel behaviour change	Travel reduction	Tier 1	4	0	1
Accessible infrastructure	Deliver new or upgraded infrastructure and services	On call shared transport	Public transport	Tier 1	2	0	1
Adaptable approach to road space management (e-scooters)	Deliver new or upgraded infrastructure and services	Networks for small, low powered, low speed transport devices	MAAS	Tier 1	4	0	1
More Freq Rail & PT Services	Deliver new or upgraded infrastructure and services	New rail services on existing lines	Public transport	Tier 1	1	0	3
Bus Priority	Maintain and optimise existing networks and services	Reduce journey times and improve reliability of bus services	Public transport	Tier 1	3	0	1

Figure 5: Example of using tool to explore overall effectiveness and cost of potential interventions based on a list of user specified deficiencies or issues (entered in the first column)

User Inputs	Intervention Catalogue	MoT Outcome(s)											
Issue/Deficiency	IC Interventions	Economic prosperity		Environment		Health		Inclusive access		Safety		Resilience	
1) User to provide list of issues/deficiencies below	3) User drop down menus to explore Interventions in Group	Min.	Max.	Min.	Max.	Min.	Max.	Min.	Max.	Min.	Max.	Min.	Max.
Consolidate growth, shorten trip lengths, co locating transport hubs with community services	Public transport fare reductions	0	0	0	2	0	2	0	4	0	1	0	0
Design and Planning - adaptable 'scenarios-based' (defend, accommodate, retreat), identify critical routes, improve operational responses to events	Design and Planning												
perceived safety (incl. crime)	Safe system approach	0	0	0	0	0	0	0	0	0	0	0	0
prioritise low risk low cost maintenance projects	Maintaining the existing road network level of service	-2	2	-1	3	0	0	0	3	0	5	0	0
Implement high quality improvements that bring about mode change	Conversion of road capacity to shared and active modes	0	1	0	2	0	1	0	3	0	3	0	2
perceived safety (incl. crime)	Safe system approach	-1	2	-1	3	-1	4	0	3	0	3	0	0
rapid transport network	Spatially integrated land use and transport networks	-2	2	-1	3	0	0	0	3	0	5	0	0
Improved services	Fixed line mass public transport	0	3	0	2	0	3	0	4	0	3	0	0
Road pricing	Time and distance based charges	-1	3	0	2	0	0	0	2	0	3	0	0
PT Fares	Public transport fare reductions	0	3	0	4	0	3	-3	3	0	3	0	0
Road safety plans, safe speed limits, reduce dangerous behavior	Safe system approach	0	0	0	2	0	2	0	4	0	1	0	0
Encourage Evs (low emission zones)	Banning polluting vehicles from a defined area	-2	2	-1	3	0	0	0	3	0	5	0	0
Encourage active modes	Networks for small, low powered, low speed transport devices	-2	0	0	1	0	4	-2	0	0	1	0	0
Encourage active modes	School based travel behaviour change	0	0	-1	1	0	0	0	2	-1	0	0	0
Accessible infrastructure	On call shared transport	0	1	0	3	0	3	0	1	0	4	0	0
Adaptable approach to road space management (e-scooters)	Networks for small, low powered, low speed transport devices	0	0	0	1	0	1	0	3	0	1	0	0
More Freq Rail & PT Services	New rail services on existing lines	0	0	-1	1	0	0	0	2	-1	0	0	0
Bus Priority	Reduce journey times and improve reliability of bus services	0	0	0	2	0	2	0	3	0	2	0	0
		0	2	0	2	-1	2	0	3	0	2	0	0

Figure 6: Example of using tool to explore overall trade-offs between outcomes associated with potential interventions